

For The Teacher

Important things to do and remember.

12

STARTING YOUR DAY

1. Unplug the WH-1 charger cable from the transmitter.
2. Place the microphone properly on your body.
3. Turn the transmitter on.

COMPLETING YOUR DAY

1. Turn the transmitter "off".
2. Plug the WH-1 charging cable. Be sure the transmitter is OFF when charging.

NOTE: Handheld microphones do not use a WH-1 charging cable

AVOID WRAPPING THE MICROPHONE CABLE AROUND THE TRANSMITTER WHEN PUTTING IT AWAY. This could break the microphone wire.

Avoid placing the Titan next to a computer keyboard and/or monitor if at all possible. These items can give off electrical interference that may cause a buzzing in the system.

REMEMBER...

- Your *Titan* uses Nickel Metal Hydride rechargeable batteries. Using any battery other than what is recommended by Lifeline Amplification Systems is not recommended as it may cause the system to not work properly. **Average battery life is 6 hours.**
- Battery can be recharged over a weekend however we recommend you do not charge the batteries longer than 2 days if at all possible.
- Use your normal speaker voice and let your system do the rest!
- Use your normal speaking voice, and let your system do the rest.
- If you have any questions about set-up or usage or have problems with your system, call Lifeline **TOLL FREE at 1-800-236-4327.**
- For a complete list of parts and accessories, consult the *Lifeline Price List* or visit our web site at www.lifelineamp.com.



User Guide



TABLE OF CONTENTS

- 2 Enjoy your Titan System!
- 2 Equipment List, Warranty, Repair Work and Cleaning Information
- 3 Lifeline Transmitter
- 4 Powered Speaker / Amplifier
- 6 Handheld transmitter
- 7 Operation
- 8 Microphone Placement, Multiple Speaker Connection
- 9 Bracket Assembly and Mounting, Transmitter Charging
- 12 For the Teacher, things to do.

Lifeline
Amplification Systems

41 Means Drive, Suite A
Platteville, WI 53818
fax: 608.348.7918
www.lifelineamp.com
800.236.4327

Lifeline
Amplification Systems

41 Means Drive, Suite A
Platteville, WI 53818
fax: 608.348.7918
www.lifelineamp.com
800.236.4327

Enjoy Your Titan Amplification System

2

Congratulations on purchasing the Titan amplification system- One of the finest and most versatile amplification systems available today. The *Titan* is the perfect amplification system for those small to medium size rooms that need high quality sound with simple installation and/or portability. The *Titan* has many features and benefits that are unique to this product. You will see the benefits and hear the clarity that come from this uniquely designed system from the moment you turn it on.

This Users Guide has been designed to provide you with product features, troubleshooting tips, and important things to remember and understand about your Titan amplification system. Our goal at Lifeline Amplification Systems is to design high quality amplification systems with superior sound quality that are easy for the customer to use and operate. If you have any questions concerning your Titan system, please feel free to call us toll free at 1-800-236-4327.

visit our web site:
www.lifelineamp.com,
your online resource
for price lists, service
orders, and accessories.

If you have questions
at any time about
your Titan, please call
us toll-free at:
1-800-236-4327



EQUIPMENT

One transmitter system:

- 1 Powered speaker/amplifier with one module receiver (installed on back of unit)
- 1 Bracket for powered speaker/amplifier
- 1 Wireless transmitter with a headset, collar, or handheld wireless microphone.
- 1 9 volt rechargeable battery for belt pack systems (AA battery for handheld system)
- 1 Battery Charger
- 1 Charging Cable (for headset and collar models only)

OPTIONAL WAYS TO ORDER THE TITAN:

- You can order the Titan with one or two wireless microphones
- You can order the Titan with no wireless microphones to be used as an extension speaker

REFERENCE THE ENCLOSED PACKING LIST FOR A COMPLETE INVENTORY LIST

WARRANTY

All main components (amplifier, speakers, transmitter, receivers, etc.) carry a 5-year warranty. All accessories (battery, charger, charge cable, mic clip, mic cable, etc.) carry a 1-year warranty. Lifeline Amplification Systems will repair and/or replace, at our option, any unit that does not function properly within the warranty time period. Please call our office for a Return Authorization number. All units under warranty will be returned (freight prepaid) to the customer. Product misuse, neglect, or abuse is not covered under warranty terms. Ask a Lifeline representative about an available maintenance agreement for this product.

REPAIR/CLEANING

Most simple repair work can be done by the customer using Lifeline's exclusively designed, field-replaceable parts. Any additional problems can be solved by Lifeline's trained technicians via telephone. Call for more information on the repair of any part or component (800-236-4327).

Lifeline Amplification Systems Inc. recommends the wireless system be cleaned a minimum of every two years. Please contact Lifeline for a price quote and shipping instructions.

Transmitter

3

1. MICROPHONE JACK

Detachable microphone cable plugs in here.

2. ON/OFF AND STANDBY SWITCH

The switch on the teacher transmitter has three positions: "on," "off" and "stand by."

When "on," the teacher's voice is amplified and broadcasted throughout the room to the entire class. An initial "pop" sound may be heard when turned to the "on" position.

The teacher uses the standby mode when he or she wishes to speak to a single student or small group privately. As a general rule, use the standby switch when the system will be used within a 15 minute time period. If not in use for more than 15 minutes, the transmitter should be turned off to conserve battery life.

3. POWER INDICATOR LIGHT

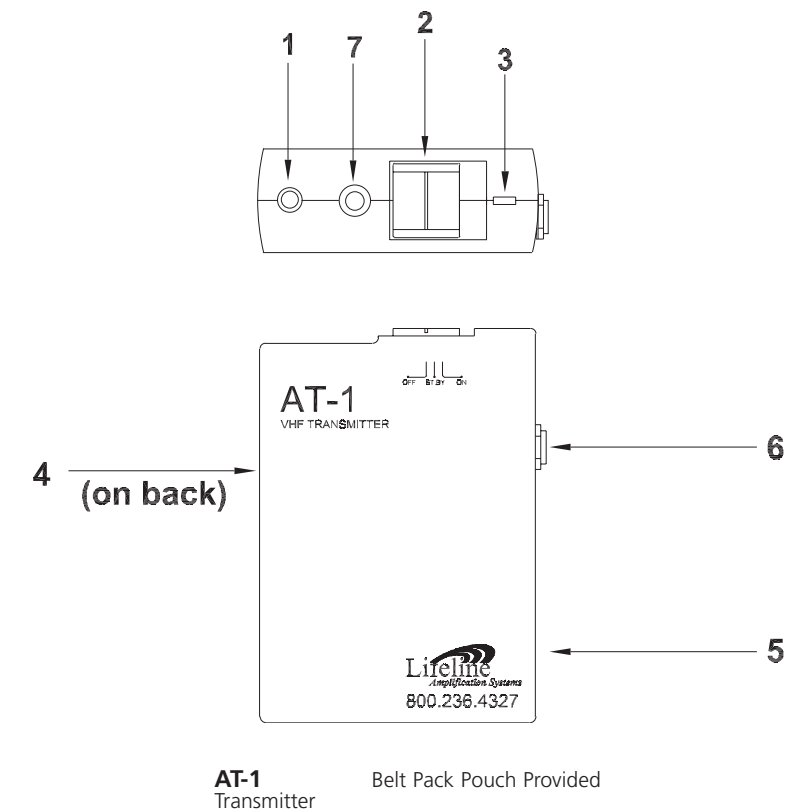
The light on top of the transmitter will shine red when the transmitter is in the stand by mode. It will shine green when the switch is in the on position. If the light is not lit, then either the power is not on or the battery is low.

4. BELT CLIP

This handy clip can be used to fasten the transmitter to a belt, waistband or pocket. (Found on back side of transmitter.) Keep in mind you will not need to use the belt clip if you are using the belt pouch provided with your system.

5. BATTERY COMPARTMENT

The A+Amplification System transmitter uses one 9-volt Nickel Metal Hydride rechargeable battery. **DO NOT USE ANY OTHER RECHARGEABLE 9-VOLT BATTERY** in the *Titan* transmitter, or it will not perform properly. Average battery life is **a minimum of six hours per charge.**



AT-1
Transmitter

Belt Pack Pouch Provided

6. CHARGING JACK

This charging jack is used to charge the battery without having to take the battery out of the transmitter. A charging cable has been provided with your *Titan*.

7. GAIN CONTROL

Used to raise or lower the sensitivity of the microphone. Small screwdriver is provided with your system.

Powered Speaker/Amplifier

A. MASTER VOLUME CONTROL

This controls the overall volume of all items plugged into the powered speaker/amplifier.

B. TONE CONTROL

This is a variable frequency high-cut tone control that is primarily used to reduce high-frequency feedback. This control reduces high frequencies when turned counter clockwise. It is NOT unusual to have this setting all the way to the right (marked flat).

C. POWER LED

This displays the state of the power as described in letter I.

D. CHANNEL A MODULE SLOT

Any Lifeline Amplification Systems wireless module can be installed in this slot.

E. CHANNEL B MODULE SLOT

Any Lifeline Amplification Systems wireless module can be installed in this slot.

- IF YOU ARE USING A 2 CHANNEL SYSTEM WITH MODULES IN BOTH CHANNELS 1 AND 2 THEY MUST BE DIFFERENT FREQUENCIES! LIFELINE AMPLIFICATION SYSTEMS OFFERS OVER 35 DIFFERENT FM FREQUENCIES AND TWO INFRARED FREQUENCIES.

F. MODULE SLOT VOLUME CONTROL

This knob affects the volume of each individual wireless plugged into each slot. Turning the volume control clockwise increases the volume.

G. MODULE SLOT ANTENNA

This is used for extended range for each individual wireless. We strongly recommend the supplied antenna be installed for each module slot that is being used. You can expect a minimum of 75 feet of range when the antenna is installed.

H. WIRED MIC INPUT

This 1/4" jack that is designed to accept any low impedance dynamic microphone. The volume for this wired mic input is letter J.

I. OFF/AUTO/ON SWITCH

This controls the electrical power for the speaker after the Master AC switch is turned on (letter Q). The controls work as follows:

OFF: The speaker is off when this switch is in the off position. The front LED will glow RED.

AUTO: The speaker will automatically turn ON from its standby mode when any signal is sensed when the switch is in the Auto position and the master on switch is turned on. The Power LED will turn from red to green when the speaker is ON. If the speaker does not hear a signal for 10 minutes then it will automatically turn itself to the standby mode. The power LED will be RED when in the standby mode.

ON: The speaker is ON when the switch is in the ON position. The Power LED will glow green. When this is ON it does not activate the auto sense feature.

J. MICROPHONE LEVEL

This controls only the microphone volume of the microphone plugged into the wired mic input (letter H). It is good practice to turn this all the way counter clockwise (minimum) when not in use.

K. LINE LEVEL

This controls the volume of anything plugged into the line level input (letter L).

L. LINE IN

This mono RCA jack is designed to broadcast audio from devices such as CD players, VCR, Televisions, or anything with a line level audio input. The input volume for this is controlled by the line level (letter K).

M. LINE OUT

This mono RCA jack provides line level audio to drive additional powered speakers or personal listening devices. The Master Volume Control (letter A) on the front will affect the volume of this line level output. A diagram on how to add powered speakers to this unit is shown on page 8 of this Users Guide .

N. AC JACK

An AC power cable is provided with the system and is plugged into the AC jack. The AC plug is polarized and will only attach one way..

O. AC FUSE

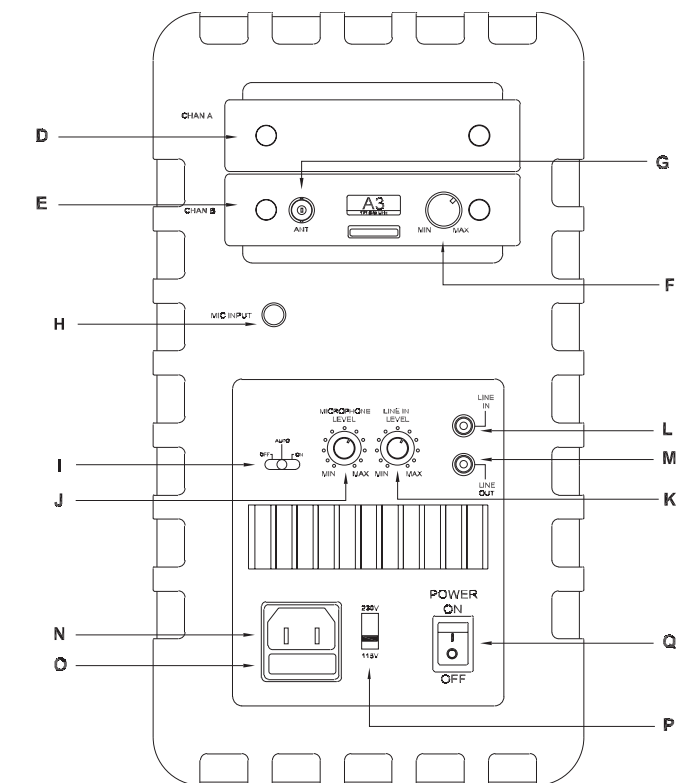
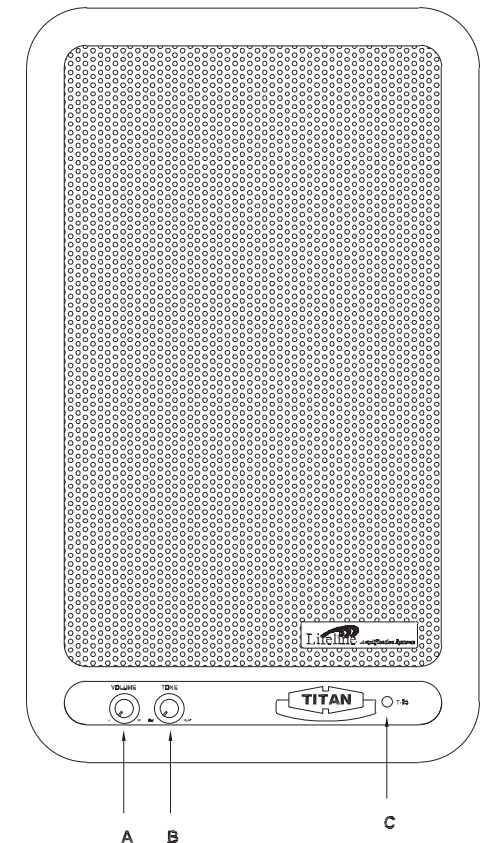
A replacement AC fuse is housed here.

P. AC VOLTAGE SELECTOR

This should always be in the down position (115V) when used in the United States.

Q. MASTER AC SWITCH

This power switch turns power on and off for the entire amplifier/speaker. The up position is on and the down position is off.



Handheld Transmitter

1. MICROPHONE ELEMENT

The AHHT-2 handheld wireless uses a high quality microphone. The metal casing protects the microphone however be careful not to drop the microphone as this could cause damage to the microphone element.

2. 3-WAY POWER SWITCH

The bottom position is off. The middle position is standby. When the switch is in the middle position (standby) the microphone will be off however this will still drain the battery. The top position is ON. A slight click may be heard when turning the system on and off.

3. POWER SWITCH LIGHT

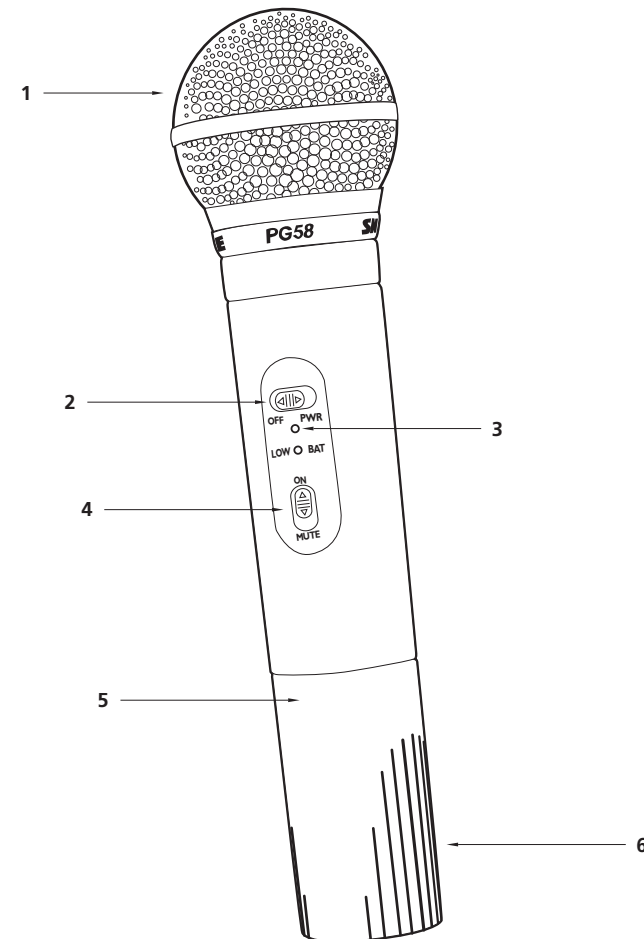
The light will not be lit when off, the light will be red when the speaker/amplifier is in the standby mode, and green when the speaker/amplifier is on.

4. BATTERY COMPARTMENT COVER

This handy clip can be used to fasten the transmitter to a belt, waistband or pocket. (Found on back side of transmitter.) Keep in mind you will not need to use the belt clip if you are using the belt pouch provided with your system.

5. BATTERY COMPARTMENT

Turning the battery compartment cover “counter clockwise” will unscrew the battery compartment cover. The AA rechargeable battery should fit tightly in the compartment. Be sure when installing the battery in the compartment the polarity is correct as shown on the bottom of the battery compartment. Do not over tighten the battery compartment cover.



Operation

Take an inventory of all the pieces supplied for the *Titan*:

- Powered speaker/amplifier with appropriate number of modules (1 or 2)
- AC power cable
- Speaker bracket with thumb screws
- Wireless transmitter(s) with appropriate microphone
- Rechargeable battery (s)
- Charging Cable (s)
- Battery Charger (s)

REFERENCE THE ENCLOSED PACKING SLIP FOR COMPLETE INVENTORY LIST

1. Look carefully at the room to determine the best speaker placement. Items to consider when choosing speaker placement:

- The T-25 requires AC power. A power cable has been provided with the system. Where AC power is available in the room should be one of the criteria when choosing speaker placement.
 - The auto circuit automatically turns the system on and off when a signal is present. You will not have to turn the speaker/amplifier on or off after it's been installed.
 - A metal mounting bracket is included with the system. We strongly recommend the T-25 powered speaker be permanently mounted using this mounting bracket. A diagram of how to install the mounting bracket is on page 9 of the Users Guide.
- NOTE: IF YOU CHOOSE TO MOUNT THE SPEAKER AT THE SEVEN FOOT HEIGHT OR ABOVE, YOU WILL WANT TO INSTALL THE BRACKET HORIZONTALLY SO YOU CAN ADJUST THE DOWN ANGLE.
- Sound is always best when it comes in front of the person. Try and choose a location that will cover the room with sound from the front if possible.
 - The higher the speaker is installed the more coverage the system will have. Try NOT to install the speaker at presenters head height as this could create a feedback problem.

2. Once the speaker placement has been chosen next install the speaker bracket following the bracket assembly and mounting as shown on page 9. Only install the speaker bracket and not the speaker!

3. Next turn the volume control of each wireless module (located on the back of the T-25 powered speaker) to the 3:00 position. It's easier to adjust this volume before you install the speaker.

4. Install the antenna on the back of each wireless module. The antenna will twist on the antenna coupler for a secure connection. Install the antenna on the back of each module.

5. We strongly recommend using the auto on/off circuitry. Make sure the AUTO is selected on the back of the powered speaker/amplifier (see page 4 letter I for more explanation).

6. Plug the electrical power cable into the back of the powered speaker/amplifier.

7. Plug any other items you intend to plug into the powered speaker (televisions, VCR, etc.). If you are using the line or mic input then set the appropriate volume setting on the back to the 12:00 position. If you are NOT using the line in or wired microphone input then turn these volume controls to min (all the way to the left).

8. Install the speaker on the speaker bracket using the thumb screws that are included.

9. Plug the power cable into electricity.

10. Turn the speaker on (on/off switch is letter Q, page 5)

11. Turn the volume control on the front of the T-25 powered speaker to the 12:00 position.

12. Turn the tone all the way to the right (flat).

13. Be sure your battery in your transmitter has been completely charged. New systems are sent with only a partially charged battery. You should have enough battery power to test the system however not last much over 1 hour. To charge the battery follow the transmitter charging diagram as shown on page 9.

14. Place your microphone in the proper position. A picture of proper microphone placement is shown on page 8.

15. Be sure your microphone cable is properly plugged into your transmitter and into your microphone making sure both are making a good connection.

16. Turn your transmitter ON. A light on the top of the transmitter should be green. You are now broadcasting!

Recommended settings of headset or collar microphones:

- Wireless Module (back of amp/speaker): 3 o'clock position
- Volume on front of *Titan*: 12 o'clock position
- Tone on front of *Titan*: All the way to the right (flat)

Recommended setting of handheld mic are the same as headset or collar *except* you may need to increase the volume settings of both the module and the front master volume control.

Walk around the room and make volume and/or tone adjustments as needed. If feedback occurs lower the tone control on the front of the *Titan*.

If you are using more than one speaker use the connection diagram on PAGE 8

Operation (CONT.)

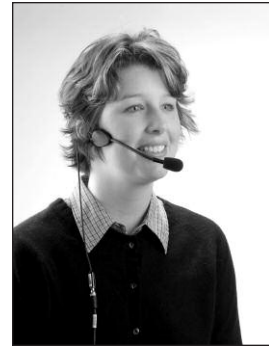
MICROPHONE PLACEMENT

Place the transmitter in a jacket pocket or clip onto a belt or waistband.



COLLAR MICROPHONE

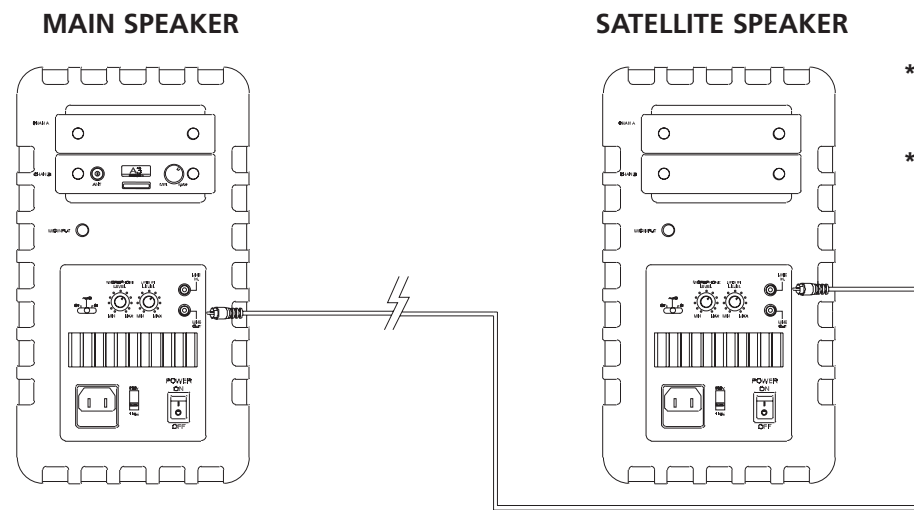
Bend the mic into position around the neck with the end of the mic in close proximity of the mouth.



HEADSET MICROPHONE

Place around the back of the head and position over your ears (adjust for comfort). The boom of the microphone should be positioned directly in front of the mouth.

CONNECTION OF MORE THAN ONE SPEAKER



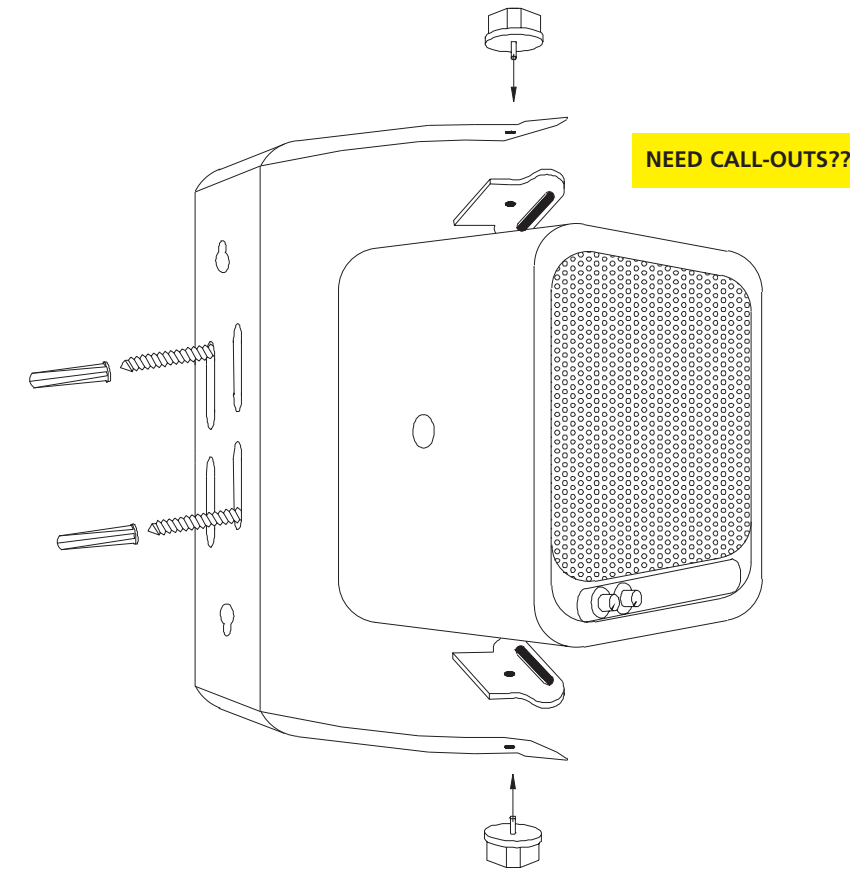
* RCA cable cannot be longer than 50ft. in length.

* Master Volume knob on main speaker will control the volume of both speakers.

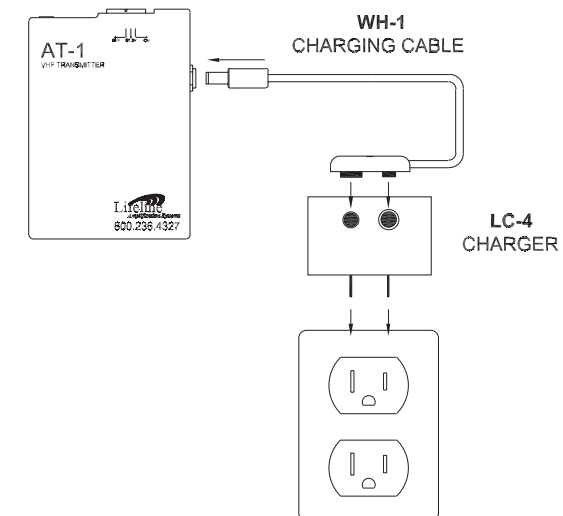
Operation (CONT.)

BRACKET ASSEMBLY AND MOUNTING

Mounting screws and anchors are provided in the system.



TRANSMITTER CHARGING



* DO NOT LEAVE BATTERY CHARGING FOR MORE THAN 72 HOURS.

Troubleshooting Guide

IF YOUR SYSTEM ISN'T WORKING...

Check the transmitter .	Is the power indicator light, on the top of the transmitter, green? If there is no green light then the battery must be replaced. If the light is red, turn the transmitter switch from “stand by” to “on”. Average battery life is 6 hours .
What color is the light on the front of the T-25 powered speaker.	If the light is not lit on the front of the T-25 powered speaker then either the unit is not plugged into electricity, the electrical cable is not making a good connection at the powered speaker, the power switch is off, or the Auto sense circuitry on the back of the powered speaker is off. If the light is RED and you try talking into the microphone and it still is red, then the microphone is not sending a signal to the powered speaker so change the battery, microphone cable, or microphone.
Check the settings for the T-25 powered speaker.	The front master volume control should be at least to the 10 o'clock position and the individual wireless module volume control (on the back of the speaker) should be at least at 12:00 position.

IF YOUR SYSTEM EXPERIENCES FEEDBACK...

Check the tone control .	Turn the tone control on the front of the T-25 powered speaker counter clockwise (to the left) until the feedback stops. It's not unusual for the volume control to be all to the left.
Lower the volume settings .	Lower the master volume control and/or the individual wireless module volume control (on the back).
Change the speaker position .	Angle the speaker differently to help eliminate reflections that may be causing the feedback.
Change microphones .	The Titan system was designed to be used with the collar, headset, or handheld microphone. If you are trying to use a lapel microphone and are experiencing feedback, try changing microphones.

Troubleshooting Guide (CONT.)

IF YOUR SYSTEM PICKS UP SOMETHING OTHER THAN THE TEACHER'S VOICE...

Adjust the antenna on the receiver .	Lower the antenna to a position that is not vertical. Try to detach the antenna completely and see if this helps (you may not have enough range without the antenna). Call Lifeline Amplification Systems if these do not help.
--	---

IF YOUR SYSTEM IS FULL OF STATIC WHEN THE TRANSMITTER IS TURNED OFF...

See the instructions for interference as stated above.

IF YOUR SYSTEM IS FULL OF STATIC OR CUTS OUT...

Make sure the battery has been recently charged for at least six hours	Replace the battery with a new or recharged battery. Try an Energizer or Duracell battery in place of rechargeable. Never charge a Energizer or Duracell battery!
--	---